



# VIVOTEK

## **Network Camera with Pan/Tilt/Zoom PZ6112、PZ6122**

---

### **Quick Installation Guide**

This guide describes the basic functions of PZ6112、PZ6122.

All detailed information is described in the user's manual.



## Warning Before Install

- Power off the Network Camera as soon as it is found smoking or smelt unusual.



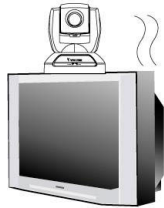
Contact your distributor when such cases happen.

- Keep the Network Camera away from the water. If the Network Camera is wet, power off immediately.

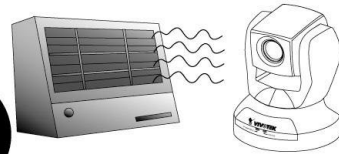


Contact your distributor when such cases happen.

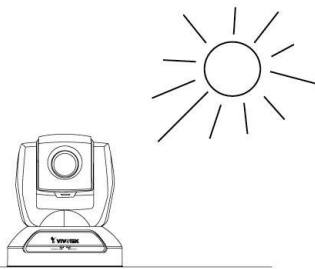
- Do not place the Network Camera around the heat sources, such as television or oven.



- Refer to your user's manual for the operating temperature.



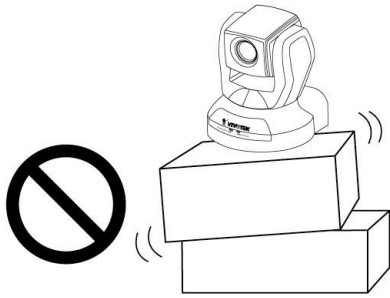
- Keep the Network Camera away from the direct sunlight.



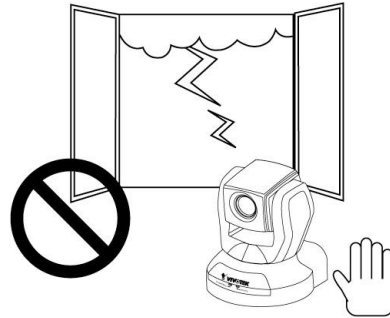
- Do not place the Network Camera in high humid environments.



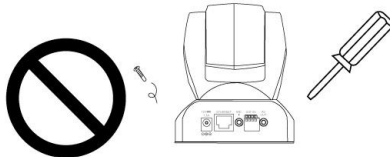
- Do not place the Network Camera on unsteady surfaces.



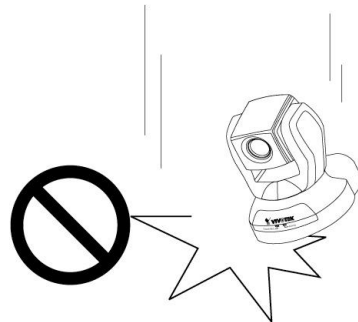
- Do not touch the Network Camera when it's lightning.



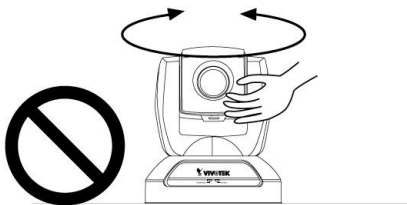
- Do not disassemble the Network Camera.



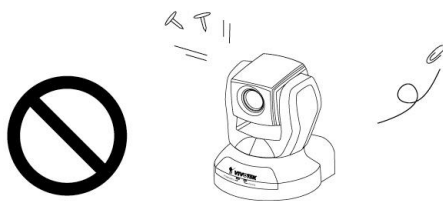
- Do not drop the Network Camera.



- Do not manually pan and tilt the Network Camera when the power is on.



- Do not insert any object into the Network Camera, such as needles.



# 1 Check package contents

● PZ6112、PZ6122



● Camera stand



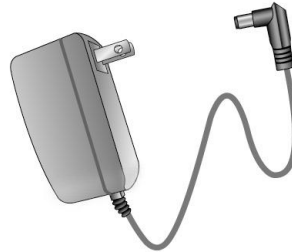
● Software CD



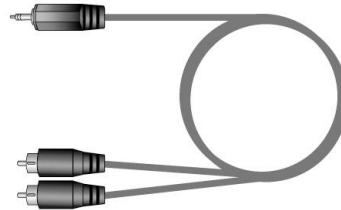
● Quick installation guide



● Power adapter



● A/V cable



● Remote controller

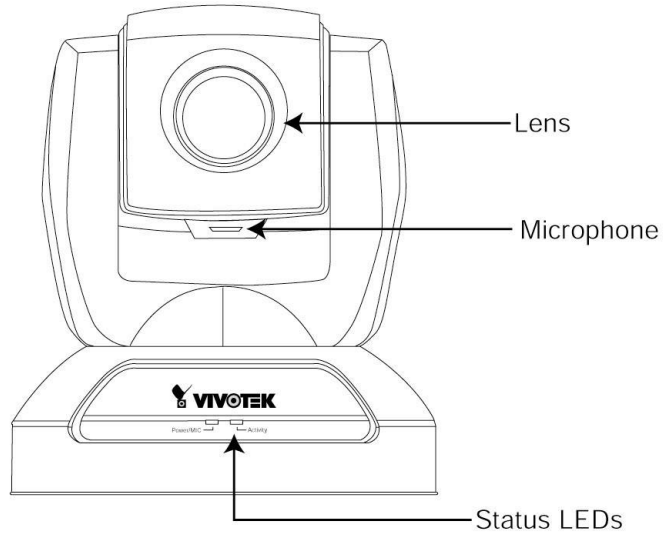


● Warranty card

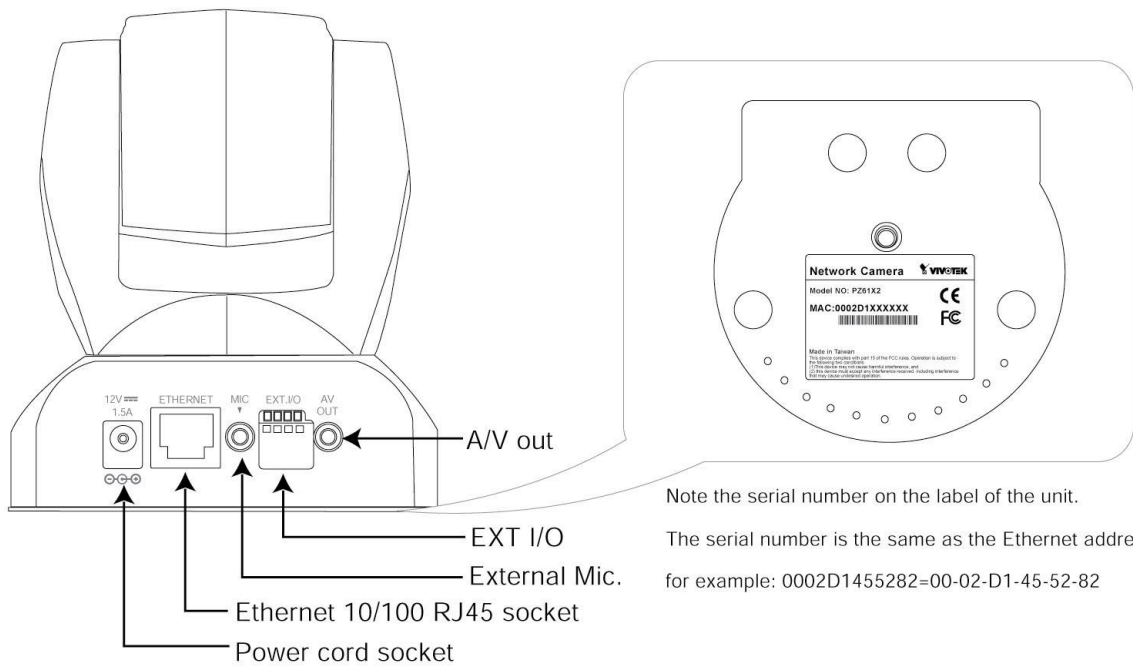


## 2 Physical description

### ● Front panel

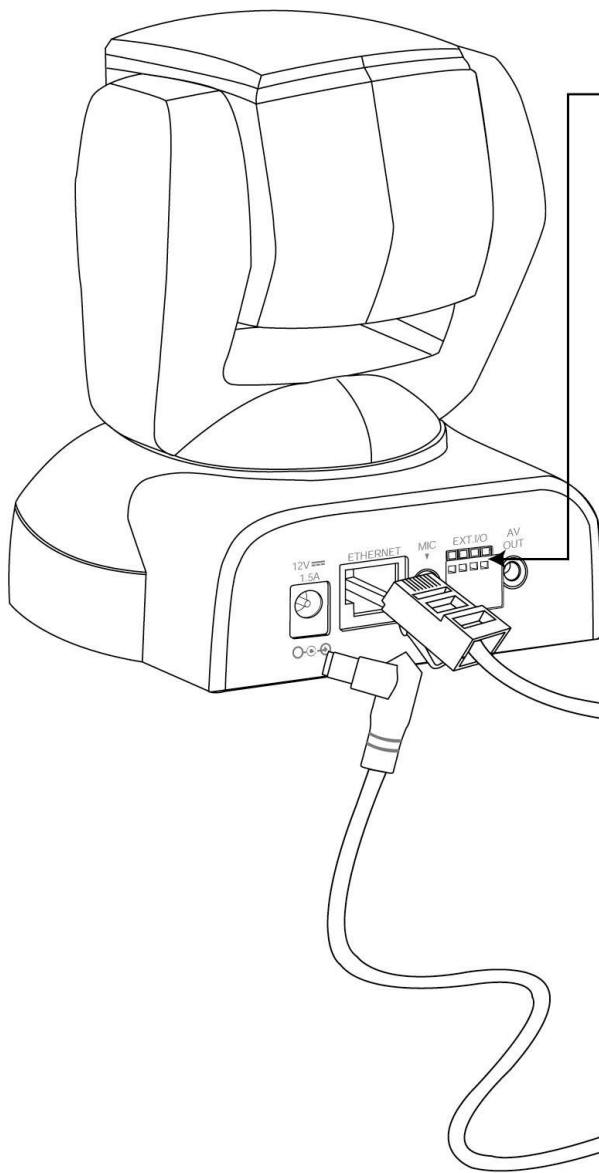


### ● Rear panel

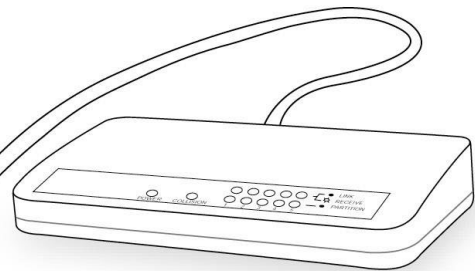


### 3

## Install the Network Camera in Ethernet network



1. If external devices such as sensors and alarms are available, make connection to the I/O terminal block.  
\*Refer to the user's manual for the I/O voltages.

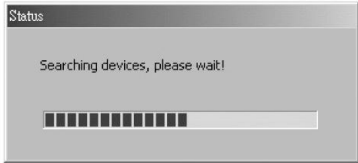


2. Use an Ethernet cable to make connection from the Ethernet port to the hub.  
\*Use a Category 5 cross cable when the Network Camera is directly connected to a PC.

3. Finally, connect the power cord to a power outlet.

# 4 Assign IP address

- 1.Run the "Installation Wizard" under "Utility" directory on the software CD.
- 2.The program will search Vivotek Video Servers or Network Cameras on the same LAN.

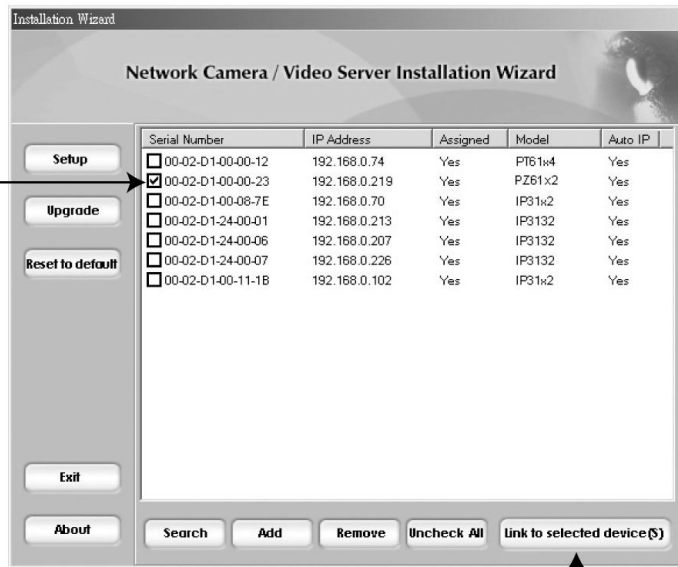


- 3.After searching, the main installer window will pop up. Click on the serial number that matches the one you just noted from

2 Physical description

- 4.Click "Link to selected device(s)" to connect the Internet Explorer to the Network Camera.

\* If there is no DHCP server on the LAN, please refer to the user's manual for the methods of assigning an IP address.



# 5

## The Internet Explorer Connects to the Network Camera



For further setup, please check the user's manual on the software CD.