

# MailSite® ExpressPro

**MailSite ExpressPro is a state-of-the-art web client for managing email, calendars and contacts built using the latest AJAX technology**

## WHAT IS IT?

MailSite ExpressPro is a state-of-the-art web client for managing email, calendars and contacts that has been built using the latest AJAX technology. MailSite ExpressPro has the look and feel of Outlook, so users that are familiar with Outlook will be right at home.

## MOBILITY & OUTLOOK 2007/2010

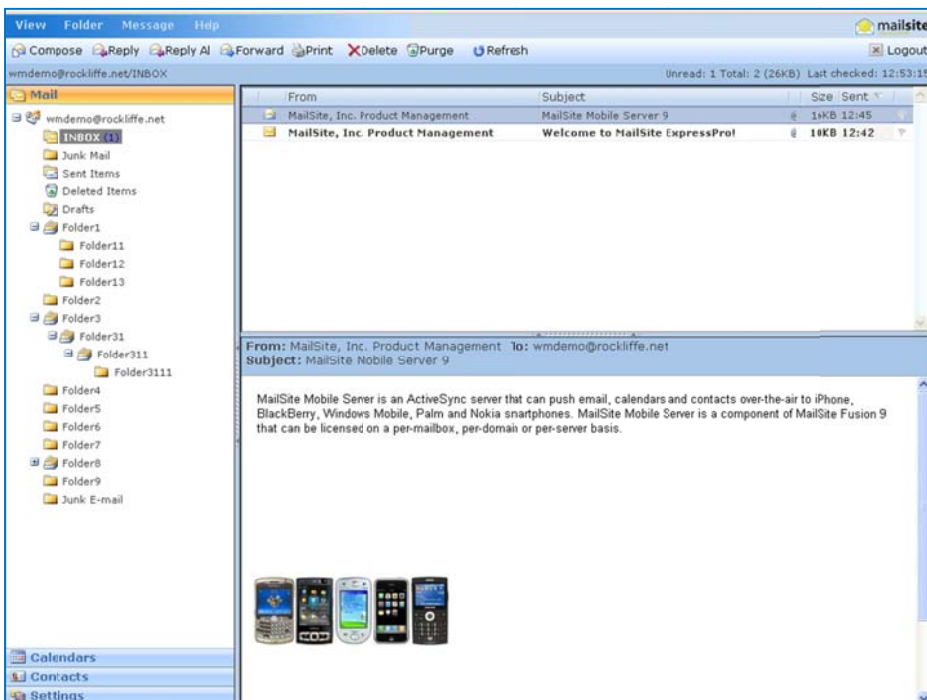
MailSite ExpressPro can automatically synchronize email, calendar and contact data with Outlook 2007 & 2010 and all leading Smartphones. This means that the user's email, calendar and contact data is always available from any device or web browser, anywhere in the world.

## WHAT'S NEW?

MailSite ExpressPro is a totally new product written from the ground up using the latest AJAX web technology. MailSite ExpressPro allows users to manage their personal email, calendars and contacts from a web browser.

## CALENDAR SHARING

MailSite ExpressPro allows users to subscribe to remote calendars such as Google Calendars. It also allows users to share their own calendars with others who use clients such as Apple Mac iCal, Mozilla Lightning and Google Calendar. Users can share all of their calendar details or just their free-busy information.



## FULL FEATURED

ExpressPro includes support for right-click and drag-and-drop functionality just like a desktop client. ExpressPro comes with support for 18 languages. Administrators can use the default "skins" or can create their own "skins" to brand the user interface to match the rest of their website. Users can even select a "skin" to suit their own taste.

## BUNDLED

MailSite ExpressPro comes bundled with all versions of MailSite Fusion at no additional cost.

## MailSite<sup>®</sup> ExpressPro

### WEB BROWSER COMPATIBILITY

- Windows, Mac or Linux OS
- Microsoft Internet Explorer 7 +
- Mozilla Firefox 3 +
- Opera 9 +
- Apple Mac Safari 3.1 +

### CALENDAR COMPATIBILITY

- Google Calendar
- Apple Mac iCal
- Mozilla Lightning

### SERVER REQUIREMENTS

#### Hardware

- Microsoft<sup>®</sup> Windows<sup>™</sup> compatible hardware
- 512MB RAM minimum (2GB recommended)
- 100MB storage minimum

#### Software

- Windows XP Professional (SP2+), or;
- Windows 7 Enterprise or;
- Windows Server 2003 Standard Edition, or;
- Windows Server 2003 Enterprise Edition, or;
- Windows Server 2008 (not Datacenter Edition).
- Internet Information Services (IIS) with Microsoft .NET Framework 2.0

### LICENSING

MailSite ExpressPro is bundled with all versions of MailSite Fusion at no additional cost. For further information on MailSite ExpressPro please contact:

[sales@mailsite.com](mailto:sales@mailsite.com)

### Advanced Calendaring

Personal calendars can be managed in MailSite ExpressPro, on a Smartphone or in Microsoft Outlook, allowing business users to keep their Outlook calendar in synch while on the road or at home. For those who use a different client, MailSite supports Google Calendar and Apple iCal. MailSite calendars can also be shared with family, friends and colleagues allowing easy meeting scheduling.

MailSite ExpressPro and Microsoft Outlook can be used to view multiple public calendars on most common systems such as Google calendar and Apple iCal.

- Manage multiple calendars from one place
- Outlook and web calendar automatically synchronized
- Collaborate with Windows, Google and Apple users

### Flexible Contact Lists

MailSite ExpressPro provides support for legacy MailSite Express (shipped with previous releases of MailSite) contacts and stores new contacts in the more powerful vCard format. Enterprise users will love the ability to see all contacts in their domain so that they have colleagues available at a mouse-click. Users can even choose to see anyone who has sent a mail currently in their Inbox. Personal contact lists can be automatically synchronized with Outlook 2007 & 2010.

### Detailed Feature List

- Web-based collaboration client
- Brand able Desktop-style interface
- Management of Email, Calendars and Contacts
- Spell Checker
- Regional settings
- Auto Reply administration
- Password administration
- Folder drag and drop management
- Sieve Filtering Control